



RAND YORK
MINERALS

Official Certificate of Analysis

Reg No. 1985/004951/07

Vat No. 4400137867

Tel: +27 (11) 463 9000

Fax +27 (11) 463 7002

Email: randyork@mweb.co.za

Benmore 2010 South
Africa

PO Box 650755

BATCH SPECIFICATION SHEET

RANDYORKSA.COM

FOUNDRY CHROMITE SAND AFS 45-50 – JU45

Foundry grade chromite sand is used for its unique properties, high thermal conductivity, heat resistant, low heat dilating and a cost-effective way to produce and use in some of the below applications:

- Specially treated molds
- Quality castings
- Metal casting
- Automotive castings
- Alloys such as stainless steel
- Chrome plating
- Metal ceramics

ANALYSIS ON DRY BASIS

| ANALYSIS/DETERMINATION | Typical VALUE |
|------------------------|---------------|
| CR2O3 (%) | 48.44 |
| SiO2 (%) | 0.95 |
| FeO (%) | 24.34 |
| Cr :Fe Ratio | 1.73 |
| CaO (%) | 0.15 |
| Al2O3 (%) | 14.3 |
| MgO | 9.95 |
| AFS | 47.25 |
| Moisture | 0.0005 |
| Turbidity | 181 NTU |
| Turbidity | 60.33 PPM |
| pH | 7.98 |
| pH 3 | 4.6 |
| pH 4 | 4 |
| pH 5 | 3.6 |
| LOI | 0.16 |

*All bagged cargo is guaranteed at 0.05% moisture

| Sieve size (µm) | Mass (g) retained [A] | Factor [B] | Product [AxB] | % Mass retained [C] | Cum % Mass retained | Cum % Mass passing | Factor [D] | Product[CxD] |
|------------------|-----------------------|------------|---------------|---------------------|---------------------|--------------------|------------|--------------|
| 850 | 1.2 | 10 | 12 | 0.80 | 0.80 | 99.20 | | |
| 600 | 7.9 | 20 | 158 | 5.25 | 6.04 | 93.96 | 1000.00 | 5246 |
| 425 | 24.5 | 30 | 735 | 16.27 | 22.31 | 77.69 | 500.00 | 8134 |
| 300 | 46.7 | 40 | 1868 | 31.01 | 53.32 | 46.68 | 355.00 | 11008 |
| 212 | 43.3 | 50 | 2165 | 28.75 | 82.07 | 17.93 | 250.00 | 7188 |
| 150 | 19.4 | 70 | 1358 | 12.88 | 94.95 | 5.05 | 180.00 | 2319 |
| 106 | 6.4 | 100 | 640 | 4.25 | 99.20 | 0.80 | 125.00 | 531 |
| 75 | 1 | 140 | 140 | 0.66 | 99.87 | 0.13 | 90.00 | 60 |
| 53 | 0.2 | 200 | 40 | 0.13 | 100.00 | 0.00 | 63.00 | 8 |
| PAN | 0 | 300 | 0 | 0.00 | 100.00 | 0.00 | 45.00 | 0 |
| | 150.60 | | 7116 | 15060.00 | | | | 34494 |
| Initial Mass (g) | 145.2 | | | | | | | |
| Losses (%) | -3.72% | | | | | | | |

* AFS 47.25

AFS Required

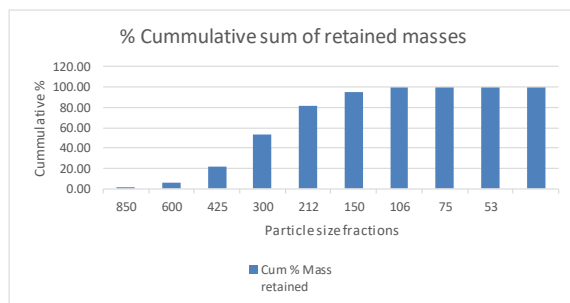
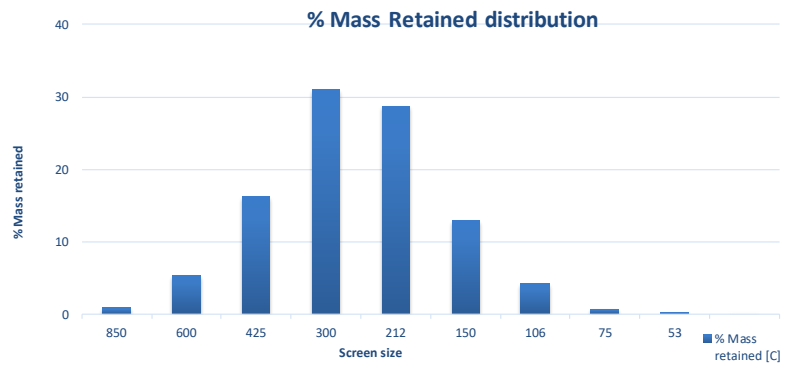
* Fines < 106µm

0.80 %

* Avg grain size

345 µm

Analytical Method used



RAND YORK
MINERALS

Tel: +27 (11) 463 9000

Fax +27 (11) 463 7002

Email: randyork@mweb.co.za

**Benmore 2010 South
Africa**

PO Box 650755